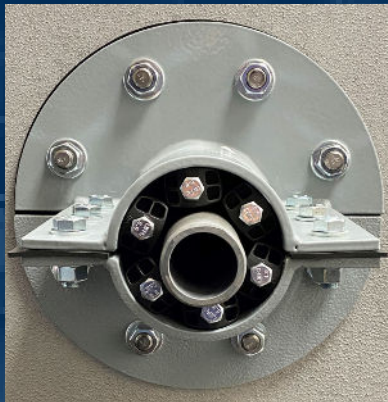


EXTERNAL MOUNT SPLIT WALL SLEEVES



**Split Wall Sleeve
Components**

-see page 1

**Installation
Instructions**

-see page 2



ISO-9001:2015 CERTIFIED COMPANY - FM537405
WWW.APSONLINE.COM



EXTERNAL MOUNT SPLIT WALL SLEEVES

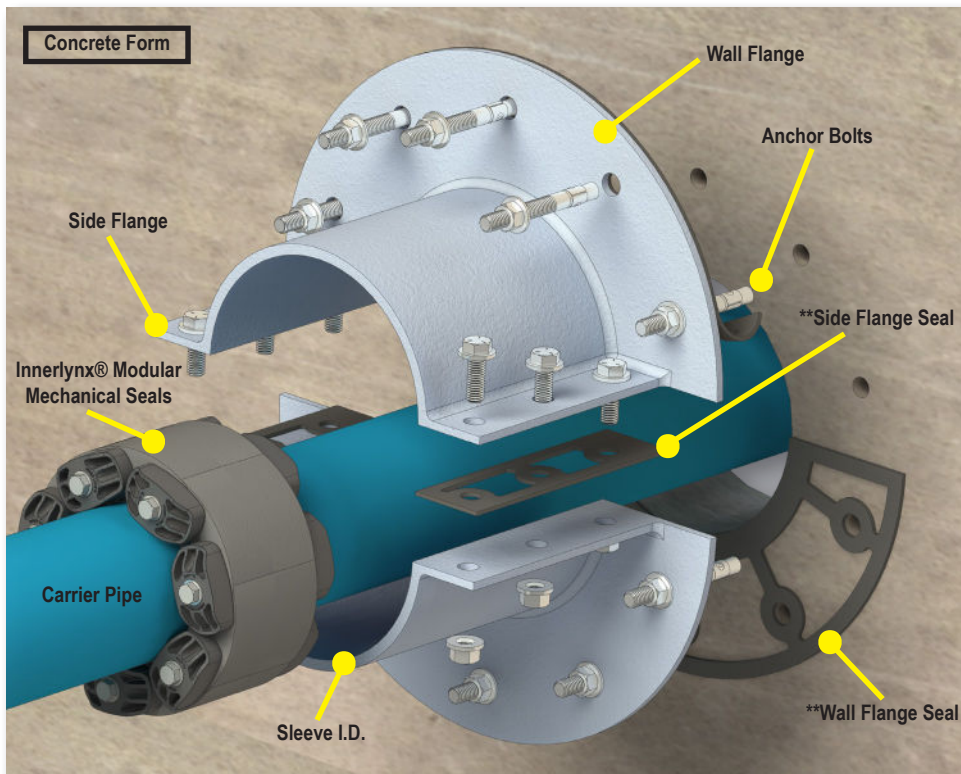
The External Mount Split Wall Sleeve is designed for sealing pipe penetrations through walls, floors, and ceilings in atypical scenarios. This wall sleeve is unique in that it can be installed after cement has been poured, whether that is 5 days or even 5 years. It also installs quickly and easily around existing piping in retrofit projects. The External Mount Split Wall Sleeve can also be used to back-up or replace existing wall penetrations which have inadequate sealing capability. These wall sleeves, combined with our Innerlynx® modular mechanical seals, can withstand up to 40 psig or 92 feet of head pressure. All External Mount Split Wall Sleeves come with anchor bolts and hardware for installation onto your pipe and concrete form. Material types offered: Gal-vo-plast® Steel, Stainless Steel, or Plain Steel.



Can be quickly & easily installed after cement has been poured & around existing piping in retrofit projects.

Applications

- Wall, Floor, & Ceiling Penetrations
- Hospital Mechanical
- Quiet Rooms
- Electronic Equipment Rooms
- Aquariums
- Commercial & Residential Plumbing
- Septic Tanks
- Vibrations, Shock & Sound Dampening
- Pumps & Tanks
- Power Plants
- Power Generation Dams
- High-Pressure Tank Guards
- Waste Water Treatment Plants
- Public Works
- Manholes & Precast Concrete Forms



Std. Pipe Sleeves	Sleeve ID	Flange OD
4	4.026	12.5
6	6.065	14.625
8	7.981	16.625
10	10.02	18.75
12	12	20.75
14	13.25	22
16	15.25	24
18	17.25	26
20	19.25	28
24	23.25	32

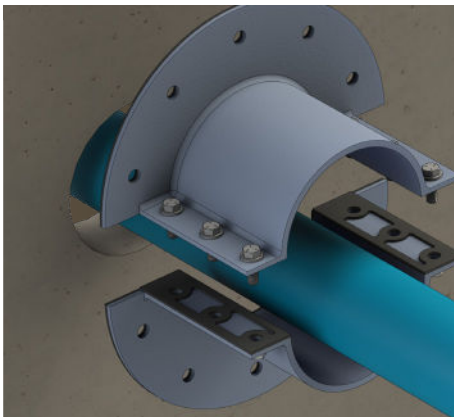
**APS manufactures the wall flange and side flange seals pre-attached to the wall sleeve prior to delivery. No additional installation instructions for the wall flange and side flange seals are required.

RECOMMENDED MATERIALS:

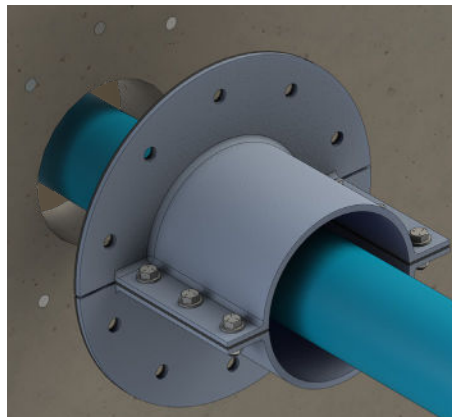
- 1/2" Masonry Drill Bit
- Pipe Stand and Marker/Paint Pen
- Bolt Lubricant (for Stainless Bolts)
- Socket or Crescent Wrenches
- Compressed Air or Blow Out Bulb

Prior to Starting: The concrete form requires inspection to ensure that no imperfections or defects exist that may result in sleeve leakage. Flatness should also be verified using appropriate means.

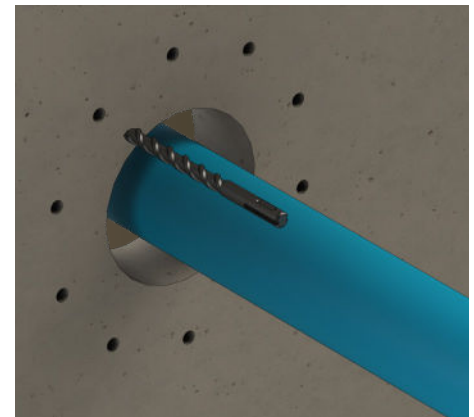
INSTALLATION:



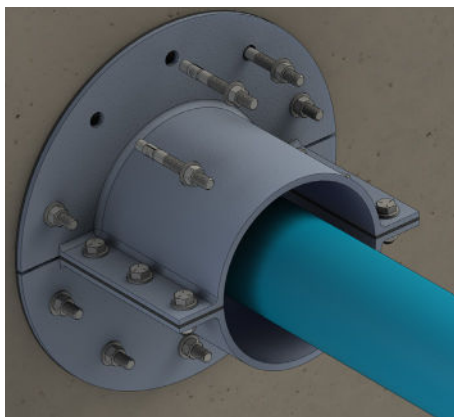
1. Aligning Wall Sleeve: Position the sleeve around the carrier pipe and align the flange faces even and sleeve ID concentric before tightening the side flange bolts to hand-tight plus a quarter turn.



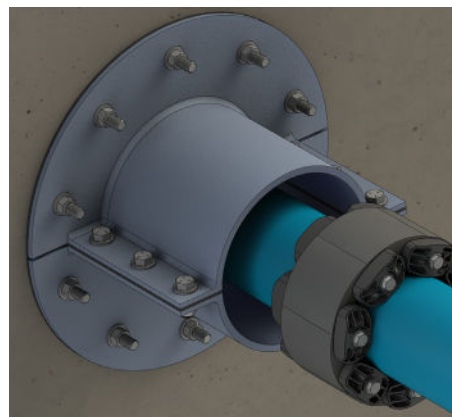
2. Marking Wall: Use wall sleeve as template to mark anchor bolt locations. A pipe stand or support can be used to help with positioning. Center the sleeve around the pipe—against the wall—and mark the bolt hole locations to be drilled.



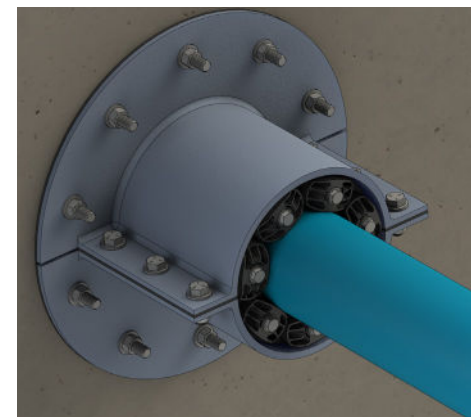
3. Drilling Holes: Drill using 1/2" masonry bit. Hole depth must be 2-3/4" min., up to 4" max. Clean holes of dust and debris to ensure proper function of anchor bolts using compressed air and a wire brush.



4. Installing Anchor Bolts: Assemble the nut and washer onto the anchor bolt with 1 to 2 threads showing above the nut. Using a hammer, drive the anchors through wall flange until fully embedded in the concrete form. In step increments, tighten anchor bolts up to 40 ft-lbs in a crisscross pattern. **See top of page 2 for instructions on installing anchor bolts.**



5. Innerlynx Installation: Reference Innerlynx installation instructions to fully install and tighten the Innerlynx around the pipe and inside the wall sleeve.



6. Sleeve Final Torque: If possible, allow the seals to relax into position and seat themselves before applying the final torque on all anchor bolts, in a crisscross pattern, to 40 +/- 10 ft-lbs. Then, fully torque side bolts to 20 +/- 5 ft-lbs. (Torque is for dry Zinc-Plated bolts. For SS bolts, use a lubricant and multiply torque by 0.7).

ORDER INSTRUCTIONS

1. Carrier Pipe OD
2. Wall Penetration ID
(EMSW Size)
3. Material Required
(Gal-vo-plast Steel, Stainless Steel,
or Plain Steel)

OTHER PRODUCTS AVAILABLE

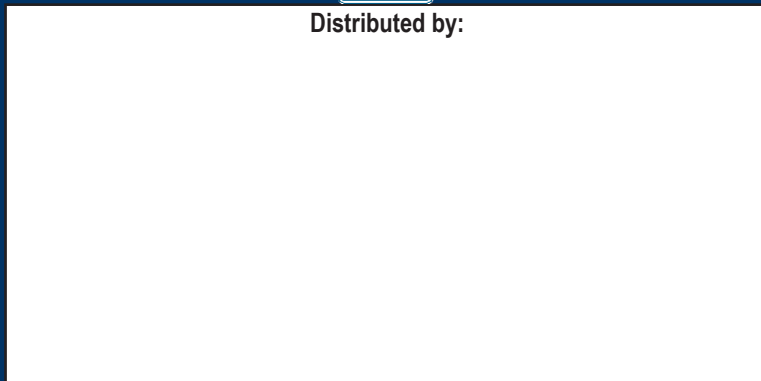
- Flange Isolating Gasket Kits
- Integra® Series Gaskets
- Kleerband® Flange Band Protectors
- Kleergel® Corrosion Inhibiting Grease
- Radolid® Nut & Bolt Protection Caps
- Casing Spacers & End Seals
- ApogeeAero® Roller Casing Spacers
- Bore & Duct Bank Spacers
- Innerlynx® Modular Mechanical Seals
- Wall Sleeves
- Foreman Nite Caps
- UBolt-Cote® & Atlas Pipe Support® Pads
- IsoJoint® Monolithic Isolating Joints
- Safety Spray Shields



PO Box 60399
Lafayette, Louisiana 70596-0399
800-315-6009 • 337-233-6116 • Fax 337-232-3860
E-Mail: sales@apsonline.com • Website: www.apsonline.com



Distributed by:



Advance Products & Systems, LLC is not responsible for errors printed in this brochure.

Advance Products & Systems, LLC shall repair or replace (within the limitations of such applicable express written warranty as may be issued by it) any product or portions thereof, which prove to be defective in workmanship or material for a period of 12 months from shipment date. The foregoing in lieu of all warranties, express or implied, and all other obligations or liabilities on the part of APS, on account of the product which it may sell. In no event shall APS be liable for consequential or special damages: nor except as it may otherwise specifically agree in writing, installation, or other work which may be done upon or in connection with the product by APS/ the distribution / dealer or others. THE LIMITED WARRANTIES PROVIDED IN THIS AGREEMENT AND THE OBLIGATIONS AND LIABILITIES OF APS ARE THE ONLY WARRANTIES MADE BY APS AS TO THE PRODUCT. APS MAKES NO EXPRESS OR OTHER IMPLIED WARRANTIES, BY COURSE OF DEALING, USAGE OF TRADE, MERCHANTABILITY, FITNESS FOR A PARTICULAR USE (WHETHER GENERAL OR SPECIFIC), OR OTHERWISE.

REV 071023